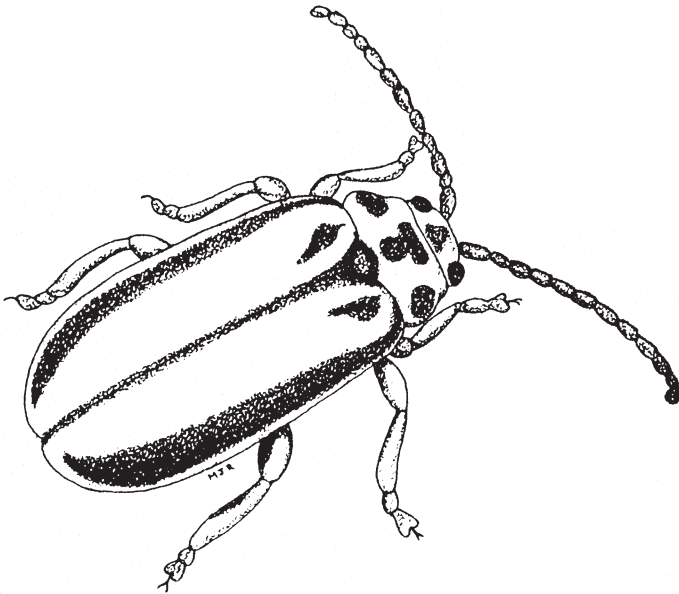


The Elm Leaf Beetle

The elm leaf beetle, *Pyrrhalta luteola*, is a serious pest of ornamental elms and zelkova in Maryland. This insect is native to southern Europe and was introduced to our area during the 1800's. It will feed on all species of native and introduced elms including American (*Ulmus americana*), English (*U. procera*), Chinese (*U. parvifolia*) and Siberian elm (*U. pumila*).



Elm Leaf Beetle

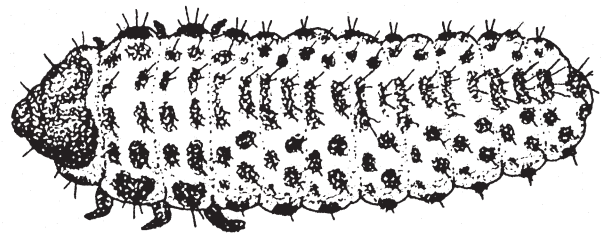
Description

All stages of the elm leaf beetle develop on or near the elm tree. Adult beetles are about 1/4 inch long and range in color from yellow to olive green with a black stripe along each side of the back. These stripes may not be distinct. Adults feed on elm leaves. Eggs are laid in clusters of 5-25, usually on the underside of leaves. They are yellow to white in color and spindle shaped. The immature beetles, called larvae, are six legged, wingless, and range in size from a

few millimeters when newly hatched to about 1/2 inch when full grown. They range in color from black to dull yellow with a series of black spots or longitudinal stripes along the back. They usually feed on the lower leaf surface. Transformation of larvae to adults occurs in a stage called the pupa which can be found in crotches of lower limbs, bark crevices, and in the soil and debris beneath the tree. Pupae are about 1/4 inch long, orange to yellow and do not move.

Life Cycle

In May when leaves are expanding on elm trees, adults vacate overwintering sites and move to the trees. Here they feed and lay eggs. Each female may lay up to 800 eggs during her lifetime. Adult feeding is characterized by rough holes in the leaves. After about a week, the eggs hatch and larvae begin feeding on leaves. They feed for several weeks and produce a characteristic skeletonization damage by feeding between the veins. Upon reaching maturity, larvae migrate toward the base of the tree where they will complete development to adults. This transformation requires 1-2 weeks after which time new adults emerge, return to the leaves and begin feeding and egg laying. By mid to late summer, the second brood of larvae will have developed into overwintering adult beetles. These move to protected locations outdoors under bark or into indoor refuges such as attics. When beetles become active in the spring they may appear in large numbers inside of homes but cause no damage.



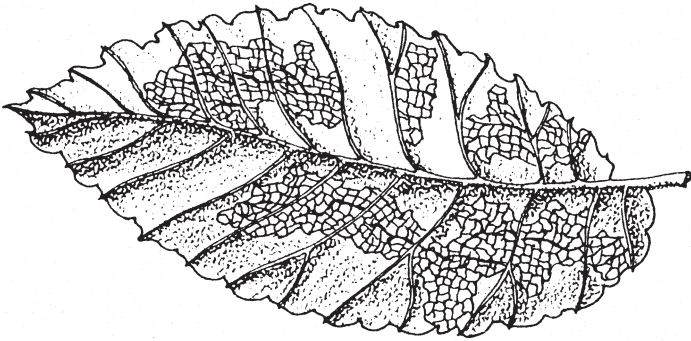
Elm Leaf Beetle Larva

Educating People To Help Themselves

Local Governments - U.S. Department of Agriculture Cooperating

Damage

Damage results from the feeding activities of adult and immature beetles on elm leaves. Heavy feeding causes leaves to turn brown, wither and drop prematurely. Severe infestations can cause trees to develop an unsightly, scorched appearance. Damaged trees may put out a second flush of leaves that are also attacked. Repeated defoliations may reduce tree vigor and increase susceptibility to more serious pests such as the smaller European elm bark beetle which is responsible for spreading the Dutch elm disease fungus.



Elm Leaf Beetle Damage

Control

Control of this beetle will be most effective when community members cooperate in the use and timing of control measures. This will help reduce the movement of beetles from untreated trees back to treated ones. Sprays should be timed to kill small larvae following egg hatch sometime in mid to late May for the first generation and July to August for the second. M-TRAK[®] is a biological insecticide that is effective against the elm leaf beetle larvae. It should be applied when the larvae are small. It is the safest material available to control this beetle.

Adult beetles may be excluded from the home by screening, caulking and weatherstripping. Beetles that gain entry may be swept or vacuumed and disposed.

Author: Michael J. Raupp, Extension Entomologist, Department of Entomology, University of Maryland, College Park, MD 20742

Revised 1/99: Mary Kay Malinoski, Regional Specialist, Home and Garden Information Center, 12005 Homewood Rd., Ellicott City, MD 21042

USE INSECTICIDES WITH CARE. READ THE LABEL DIRECTIONS. FOLLOW ALL SAFETY PRECAUTIONS.

Mention of trade names in this publication does not constitute an endorsement by the Maryland Cooperative Extension.

**Have a home pest or garden question?
Call the Home and Garden Information Center**

1-800-342-2507

www.hgic.umd.edu